

"eduroam" services

eduroam is a global service that enables IITM users to obtain Internet connectivity when visiting other eduroam enabled institutions through WiFi

With eduroam you get Internet access when visiting other eduroam enabled universities, colleges and research centres. This facility would enable users to get authenticated and connected to the visiting institutions network using IITM LDAP ID (eg. username1@iitm.ac.in) and password. It also enables visitors from other eduroam enabled institutions visiting IITM to access Internet using their home institute ID and password.

Instructions to connect SSID eduroam

Visitors : Use your University / Institution settings.

Mobile devices:

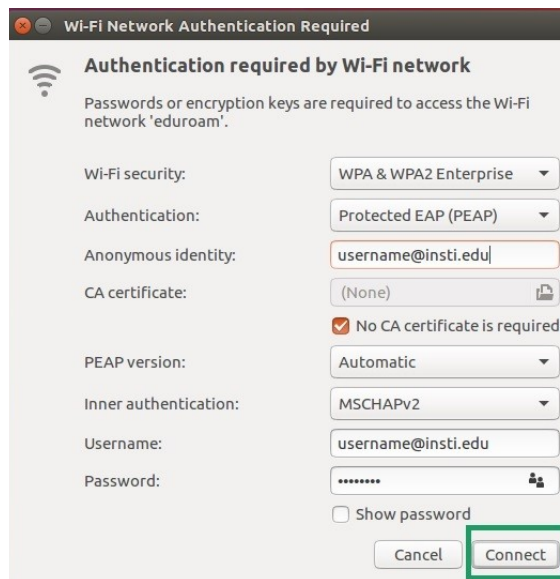
Select SSID “**eduroam**“ and in the pop-up select the following (IITM users visiting other Universities).

Visitors should use their own University settings.

- EAP type - **PEAP**
- Phase-2 authentication - **MSCHAPV2**
- CA certificate - (unspecified)
- Identity - [*Enter your LDAP username*] (ex. **username1@iitm.ac.in**)
- Anonymous identity - [*Enter your LDAP username*] (ex. **username1@iitm.ac.in**)
- Password - [*Enter your password*]

"eduroam" services

Linux

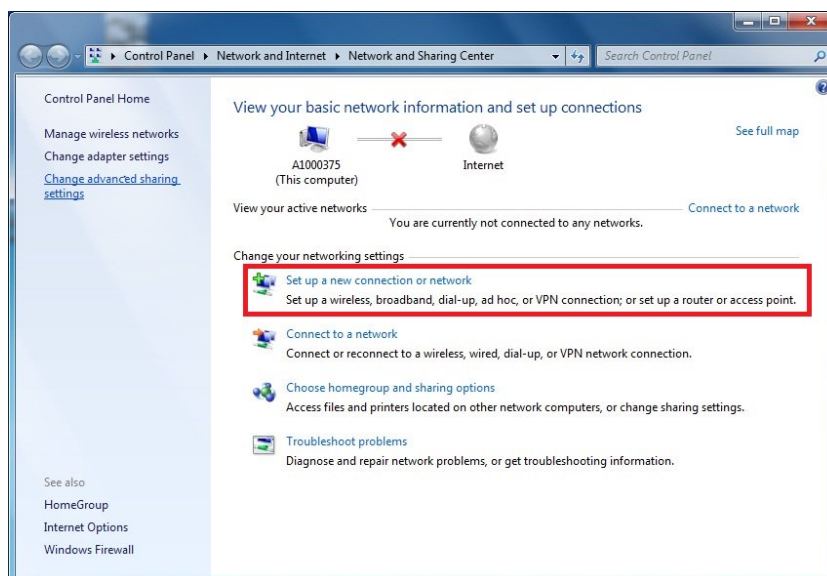


Mac & Windows 10

1. Connect to the **eduroam network**.
2. Enter your **username** (ex. **username1@iitm.ac.in**) and password.

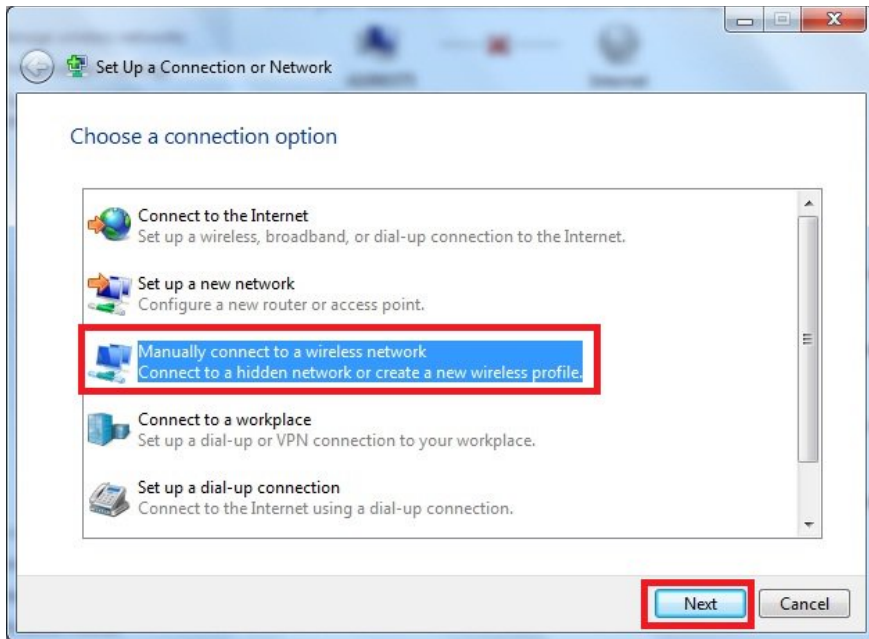
Windows 7

1. On Windows 7 wireless clients, go to Control Panel >> Network and Sharing Center >> Set up a new connection or network.

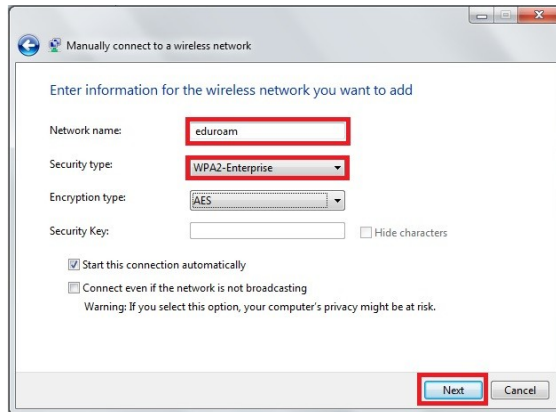


"eduroam" services

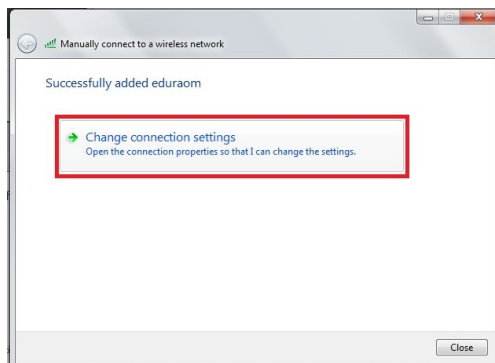
2. Select **Manually connect to a wireless network**, then click Next



3. Enter the SSID name eduroam in Network name, select WPA2-Enterprise as Security type, and then click **Next**.

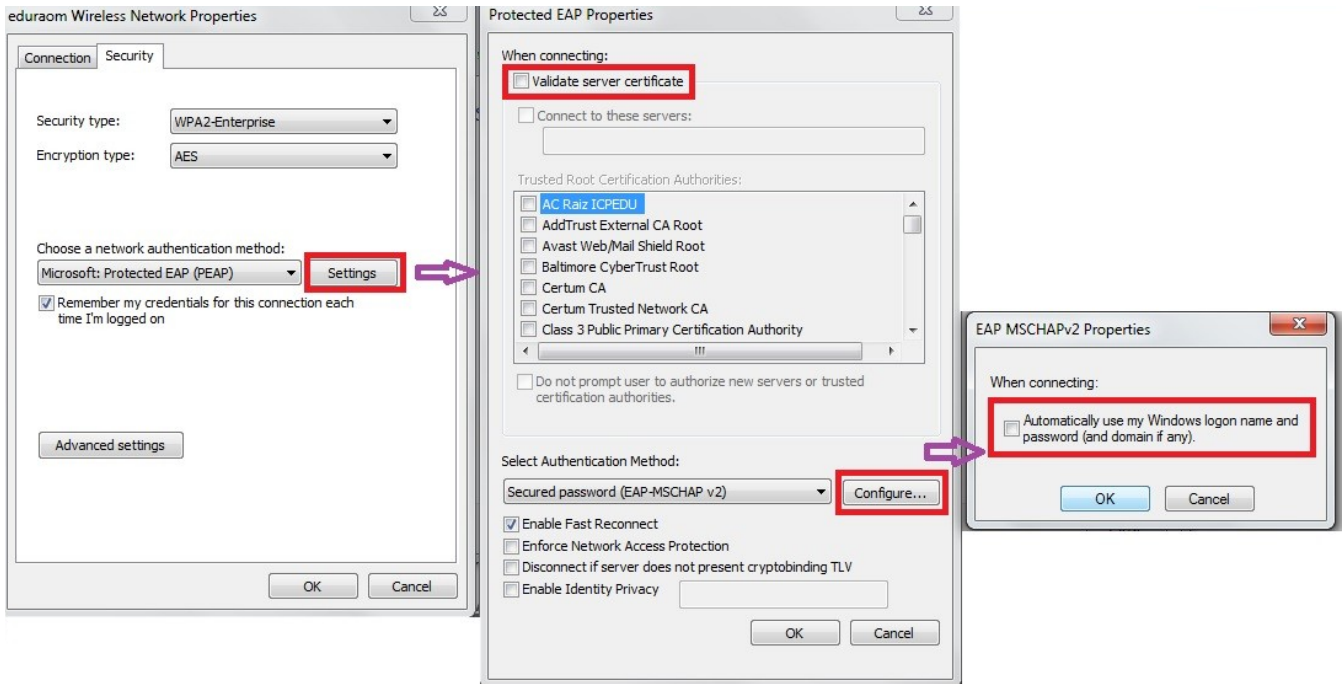


4. Click **Change connection settings**

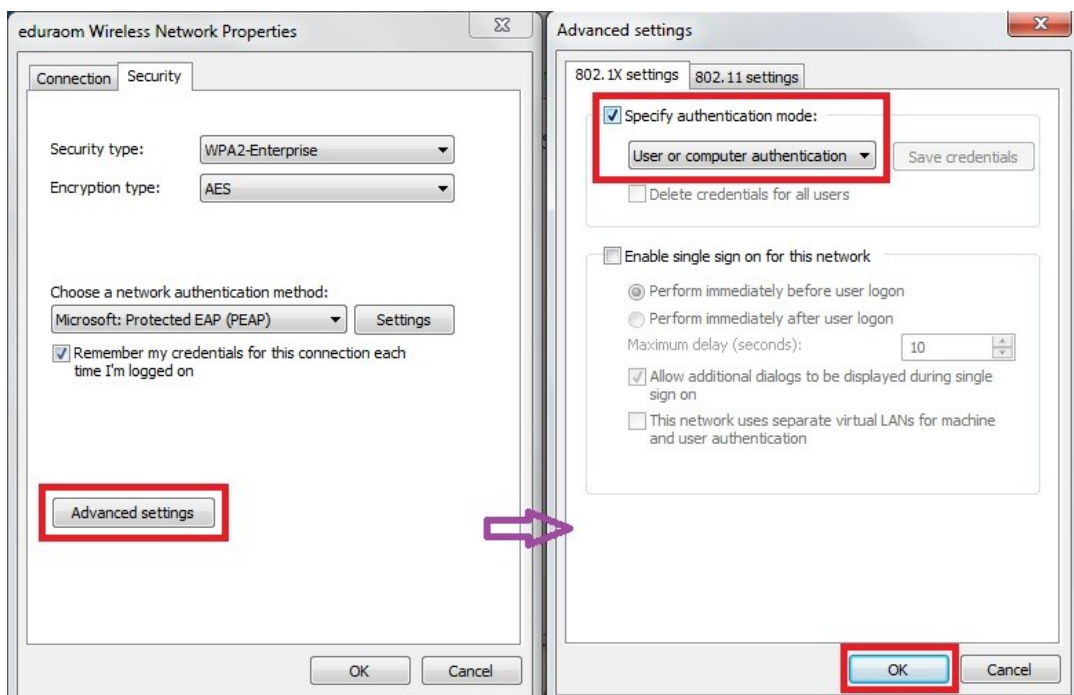


"eduroam" services

5. In Security tab, click Settings, un-check **Validating server certificate**. Click **Configure...** and un-check **Automatically use my Windows logon name and password (and domain if any)** then click **OK**.



6. Click **Advanced settings**, enable **Specify authentication mode**, and choose **User or computer authentication**, then click **OK**.



"eduroam" services

7. Connect to the wireless network “eduroam”.



8. When prompted for user credentials, type the username (ex. username1@iitm.ac.in) and password.

